

*Your Home*  
IN THE HEART OF THE CITY



ESTD. 2004

**ABISH VISTA**

PANDESHWARA, MANGALORE

A PLACE TO CALL  
YOUR HOME.



ESTD. 2004

# ABISH VISTA





# ABISH VISTA

Make your home in the heart of the city at **ABISH VISTA**. Centrally located at Pandeshwara Road, with everything of importance in close proximity from places of worship, supermarkets, bus stands, railway station, malls and educational institutions, one is never far away from the major wants & comforts of life. Every residential unit consists of relevant modern amenities and has been planned to provide your family with the comforts and security they need for a blissful life. With an eye for aesthetics & quality construction, **ABISH** Builders provide you a slice of heaven right in the heart of the city to call your own at **ABISH VISTA**.



# LIVE TO THE FULLEST.

Experience beautifully designed homes nestled within expansive spaces that welcome fresh air and natural light. Every detail reflects a perfect harmony of comfort and elegance, making this community a true work of art.

Step into a lifestyle thoughtfully crafted to meet your every need—where luxury, convenience, and a sense of belonging come together to create an exceptional living experience for you and your family.



70 spaciouly designed  
Apartments in 14 floors



2 level covered  
car parking



Landscaped Terrace



Foot reflexology  
pathway



Gymnasium / Yoga and  
meditation deck



Children's play area



Pool table / Arcade  
games area



Senior Citizen lounge/  
BBQ deck



Security room



Reticulated  
gas connections



Society office



Spacious  
visitors lounge



24x7 Generator  
Backup



CC. TV  
Surveillance system



## A LOCATION THAT ELEVATES YOUR LIFESTYLE



# LIMITED UNITS EXCLUSIVE LIVING

Discover a Captivating Living Experience.

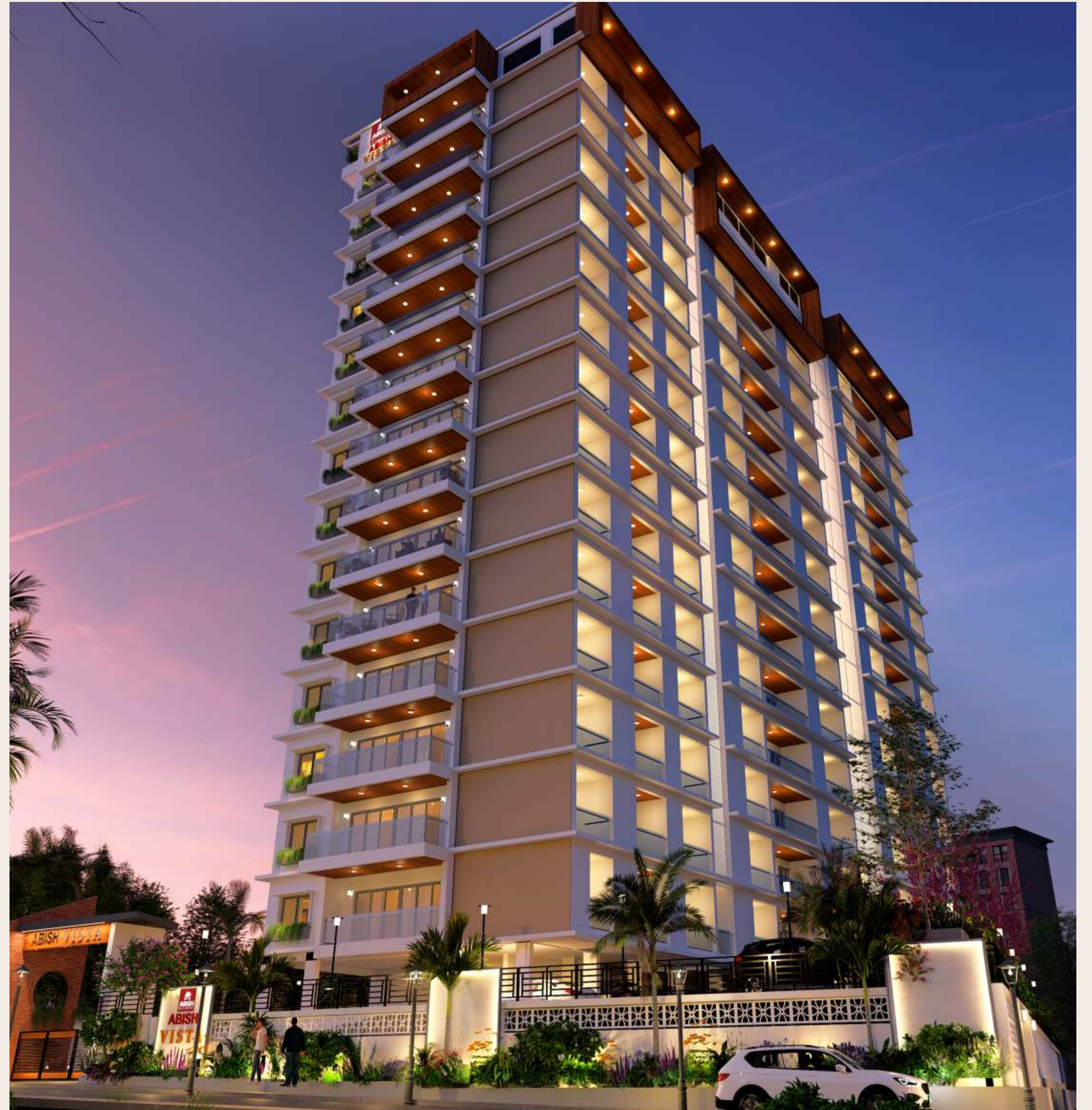
Step into a world where elevate living meets exceptional design. Thoughtfully curated amenities and striking architecture come together to transform your everyday lifestyle.

## ABISH VISTA

# 70

3 BHK  
PREMIUM APARTMENTS

**100% VAASTU COMPLIANT UNITS**





# A PLACE OF YOUR OWN

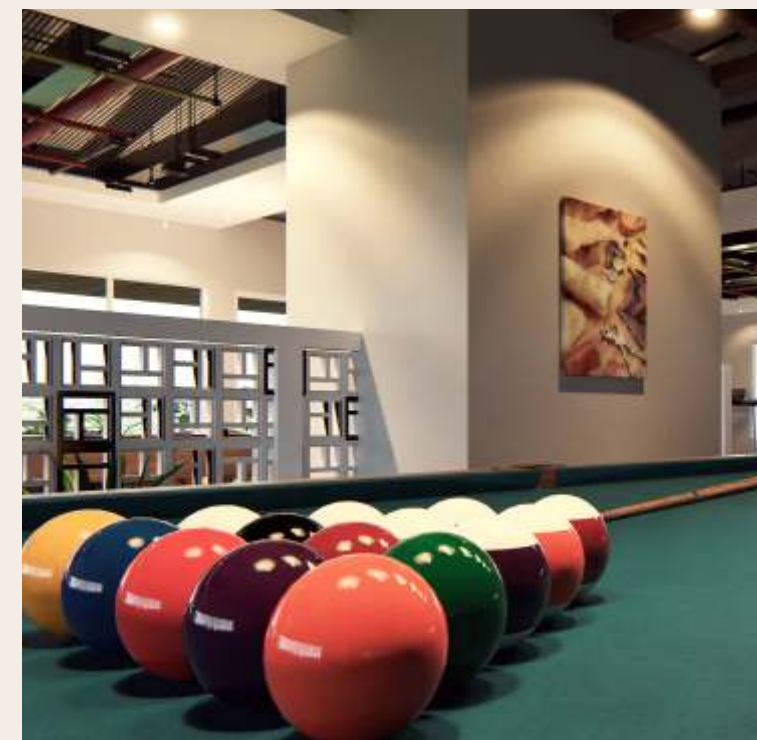
Slow down life to a leisured pace, set the tone to a relaxed outlook.





PREPARE TO BE  
INSPIRED,  
INDULGED,  
AND  
TRULY AT HOME.





# FITNESS CENTERS FOR YOUR WELL-BEING

INDOOR GAMES ROOM | GYM AREA | YOGA ROOM

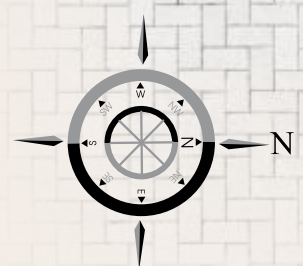


# TYPICAL FLOOR PLAN

(2nd Floor - 14th Floor)



- 1 3 BHK 1700
- 2 3 BHK 1775
- 3 3 BHK 1875
- 4 3 BHK 1660
- 5 3 BHK 1660



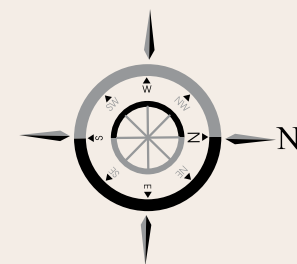
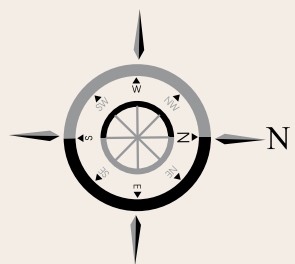
FLAT NO - 01

3 BHK | SALE AREA  
1700 SFT



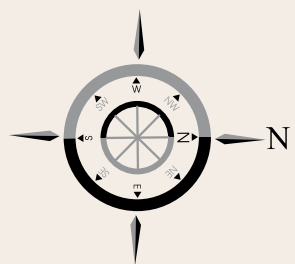
FLAT NO - 02

3 BHK | SALE AREA  
1775 SFT



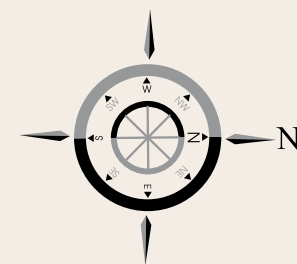
FLAT NO - 03

3 BHK | SALE AREA  
1875 SFT



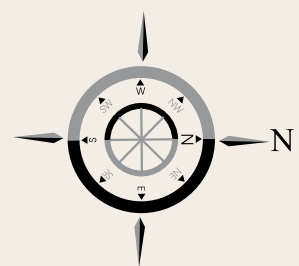
FLAT NO - 04

3 BHK | SALE AREA  
1660 SFT



FLAT NO - 05

3 BHK | SALE AREA  
1660 SFT



# GENERAL SPECIFICATION



Fully framed RCC structure with External Walls constructed in Laterite Stone/Concrete Solid Blocks, Partition walls constructed in Concrete Solid Blocks



Building internal walls and ceilings are finished with single coat smooth finish cement plaster and external walls double coat sponge finish with cement plaster



Premium quality electrical fittings for common areas, car parking areas, yard compound wall & gates



Premium interior emulsion painting over the putty finished internal walls & ceilings



RCC overhead water tank above terrace and water storage sump tank at Lower Ground Floor



Separate water tank for firefighting



Exterior grade emulsion painting for external walls



Melamine polish for main door frame & shutter



Premium quality vitrified tiles for main flooring inside the flats



Premium quality glazed tiles for toilet walls and anti - skid tiles for toilet flooring



Melamine Polish for Internal door frame



All the metal surfaces coated with metal primer and painted with enamel grade colour



Premium quality tiles for balcony and work area flooring



Wooden frames with veneer fitted flush door shutter with melamine polish finish for main doors.



## ELECTRICAL

- Power allotment: 6 kw for each apartment
- Premium quality PVC insulated cables
- DB accessories and modular switches



## LIVING & DINING

- Adequate Lights & Fan points
- T.V. point with DTH/Cable point
- AC points for Living area



Premium Quality fittings & branded door locks for main door



Wooden door frames with laminate finish Flush door and premium quality Ironmongery for bedroom doors



## BED ROOMS

- Adequate Lights & Fan points
- T.V. point in all Bed rooms
- One AC point each for all Bed rooms



## KITCHEN

- Adequate Lights & Fan points
- Adequate Power Points, Provision for Chimney & Exhaust Fan
- Electrical Provision for Water Purifier near Sink
- Electrical Provision for instant Geyser
- Reticulated Gas pipeline connection and gas meter
- Provision for Washing Machine at Work Area



Granite frame with Fibro Tech door shutter with premium quality fittings for toilets

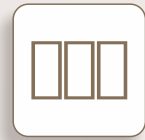


Anodized/ powder coated Aluminium Glazed windows with safety grills



## PLUMBING

- Premium quality branded plumbing pipes and fittings for pressure tested pipelines of water supply & drainage network



Anodized/ powder coated Aluminium Glazed French doors



Anodized/ powder coated Aluminium Glazed Ventilators with provision for fitting exhaust fan in the toilets



## BALCONY

- Ceiling Light point
- 5 amps Switch & Socket



## BATHROOMS

- R.C.C Base slabs treated for water proofing in all Bathrooms
- Pressure Checked Plumbing and Drainage lines
- Concealed Flush tank for EWC Flush
- Single Lever Diverter Shower unit for all Bath Rooms
- Premium quality Branded Wash Basin & Wall mounted E.W.C. in Toilets
- Premium quality Branded CP Plumbing Fittings
- Premium quality Branded Health Faucet in all Toilets
- Water line Provision for Geyser in all Toilets



Modular electrical Switches and Premium Quality Wires and DB fittings



Premium quality plumbing and sanitary fittings in toilets

# LOCATION

WITHIN 3 KM



## EDUCATIONAL INSTITUTIONS

Srinivas University City Campus  
St. Rita's Schools  
St Anns Schools  
Rosario Group of Institutions



## HEALTHCARE

Wenlock District Hospital  
Govt. Ladygoshen Hospital  
Yenepoya Specialty Hospital, Kodialbail  
Father Muller Medical College Hospital, Kankanady



## PLACES OF WORSHIP

Shree Mangaladevi Temple  
Shree Mahalingeshwara Swamy Temple, Pandeshwar  
Masjid Ibrahim Al-Khaleel, State Bank  
Ahmadiyya Masjid, Pandeshwar  
Jumma Masjid, Bolar  
CSI Kanthi Church, Mangaladevi  
CSI St. Paul's English Church, State Bank  
St. Rita Church, Morgan's Gate  
Our Lady of Rosary Cathedral (Rosario Church)



## SHOPPING & MULTIPLEX

Fiza by Nexus Mall  
City Centre Mall  
Central Market



## SPORTS & LEISURE ACTIVITIES

Yemmekere Swimming Pool  
Gujjar Kere, Bolar  
Nehru Maidan

Promoter



Estd. 2004

## **ABISH BUILDERS PVT LTD**

📍 304 Kushe Sadan, 3<sup>rd</sup> Floor, K.R.R. Road  
Mangaluru - 575 003.

FOR BOOKINGS CONTACT

☎ **+91 89700 11888, 89700 12888**

✉ [info@abishbuilders.com](mailto:info@abishbuilders.com)    🌐 [www.abishbuilders.com](http://www.abishbuilders.com)